



EPP

Technical Rider

COMPANY: THEATER CORPUS

WEBSITE: www.theatercorpus.com

Enclosed with technical drawings and project description. Last updated: 25.06.2023

Video of performance: <https://www.youtube.com/watch?v=3gNftcc98Oo>

Contact Information:

Artistic Director Theater Corpus:

Tormod Lindgren, Seljeveien 7c 1452, Nesodden, Norway

P: +47 954 18 875

E: tormod.lindgren@gmail.com

Crew:

Concept, directing, scenography-, costume-, puppets : Tormod Lindgren

Playwright: Aina Villanger after the Novel EPP by Axel Jensen

Composers: Lars Skoglund

Video designer : Peter Knudsen

Light designer : Oscar Udbye

On tour:

Tour manager and artistic director : Tormod Lindgren

Performers: Geir Robsrud, Thomas Hildebrand and Dominika Minkazs-Sira

Technician/artist: Peter Knudsen - Sound/Video

Technician light : Kåre Nordseth

Audience:

Age: Adult, and young audience from 12 years

Duration: 75 minutes

Language : Norwegian with English subtitles

In general:

Please contact us for any questions. Everything can be solved when communicated in advance.

The performance is puppet theater with small details. For the visibility of the puppets it is preferably with auditoriums with amphi that hold no more than 200 spectators.

Time schedule will be discussed in every case, but if load-in and set-up is the same day as performance we should get in at 9am if show is 7pm. The stage cannot be shared with anyone else between set-up and load-out. The take-down after the last performance will take about 1 hour and 15 minutes depending on how complicated the load-out is.

Scenography, costumes, and props will be shipped by the production company if nothing else is agreed. In most cases we therefore need a parking place nearby to get in/get out for an approximately 10m³ van, (6m long) . Our need for loaders depends on how difficult or simple the load-in facilities are. The tables can be dismantled to fit into the van for transport. The props, puppets and costumes are packed in 2 flight cases measuring approximately 40 x 60 x height 120cm.

There is no use of smoke machine/hazer or other special effects like pyrotechnics, electrical cigarettes, strobe, confetti or similar. We are not splashing any water or other liquids on stage.

The total crew is 3 actors, 2 technicians and artistic director/tour manager. The whole team speak English.

Stage requirements:

The performance needs a stage floor of minimum 9 x 6 meters. The grid height should be minimum 4 meters. The floor must be even and the stage must be clean and empty by get in. The organizer provides 4 black side covers (approximately 100cm large) and 2 tables (approximately 100x60) for puppets/props. 4 x towers for lights with heights approx 2 m. We need minimum 3 bars above stage with swl +150kg for lights, plus 1 bar in the hall for front lights.

Scenography :

Attached are technical drawings. The scenography consists of 3 “tables” on wheels (designed as two flats and a corridor) that are moved/rotated by the performers. They all have battery run, remote controlled lights installed, so no cables. The tables can be dismantled to fit into the van for transport. The props, puppets and costumes are packed in 2 flight cases measuring approximately 40x 50 x 100cm height 180cm. The technicians assure the set up of the scenography.

Puppets and props:

There are 10 figures/puppets in the show. We need two tables for the puppets that are not “on stage”. The company brings basic hand tools for minor repairs and maintenance. The actors assure the set-up of the puppets and props.

Costumes:

The performers do not change costumes during the performance. No need for help with the dressing, but the venue must provide an iron and a ironing board, as well as washing and drying facilities for costumes. It is an advantage if the venue has a sewing machine available for repairs.

Lights:

We need one technician in-house who is familiar with the stage, bars and all the lighting, video and sound equipment to be present on stage during set-up and available by needs. Power needs: Minimum 4 separate power circuits 16A 230V plus power for the dimmer channels and the local PA system.

The scenography consists of 3 "tables" on wheels (designed as two flats and a corridor) that all have battery run, remote controlled Led-lights installed with wireless dmx (WDMX G5 system)

Additional lights needs :

(see stage plot for detailed information about fixture placement)

Hanging from stage-bars:

3x ETC Jr. Zoom profiles or similar (25-50 degrees)

4x ETC Source 4 zoom profiles or similar (25-50 degrees)

4x PAR 64 CP 60

3x PAR 64 CP 62

Addition: Access to in-house front»wash», for example 4x 1kW fresnels who covers the whole stage opening.

On 4 towers approx 2 m:

8x ETC Jr. Zoom profiles or similar(25-50 degrees)

4x RGBW PAR like RushPar2 or similar (with smooth dim and throw of 36 degrees or more)

Totally minimum 22ch dimmers à 10A

Cabling to everything, plus some coffee ☺

Lightdesk

The show file is GrandMA . In most cases we bring a GrandMA console . Minimum 1 dmx-connection between foh and stage.

Videoprojections:

The show has video projections that run all through the show. They are played on MAC with Qlab.

The performance uses 2 video projectors during the whole show :

- One smaller projector placed at the back of the stage, that is used to project at the plexiscreen-back of the 2m central scenographic table. The company will provide this projector.
- The other is placed over the auditorium and is used to project at the back wall, or projection screen (depending on the facilities of the venue). Projections preferably cover the whole back wall. Estimated need: minimum 10000 lumen The venue provides this projector.
- In addition to this we use subtitles. They can be projected directly on the back wall. The venue provides this projector.

Sound:

Make sure there are no disturbing sounds from other rooms or from outside. The music is on tape and played on MAC with Qlab. Music and amplified speech will be played over the speakers.

PA: We need a PA system of good quality that delivers good coverage in the whole room.

Monitors: ?

Mixer: If nothing else is agreed we will use the mixer of the venue.

Microphones: Will be needed : 2 channels wireless microphone system of good quality and well known brand. 2 «pocket» transmitters, 2 receivers and antennas depending of experienced needs in-house. In most cases the receivers will be on stage, not FOH. Microphones and transmitters are to be provided by venue.

Transport and travel:

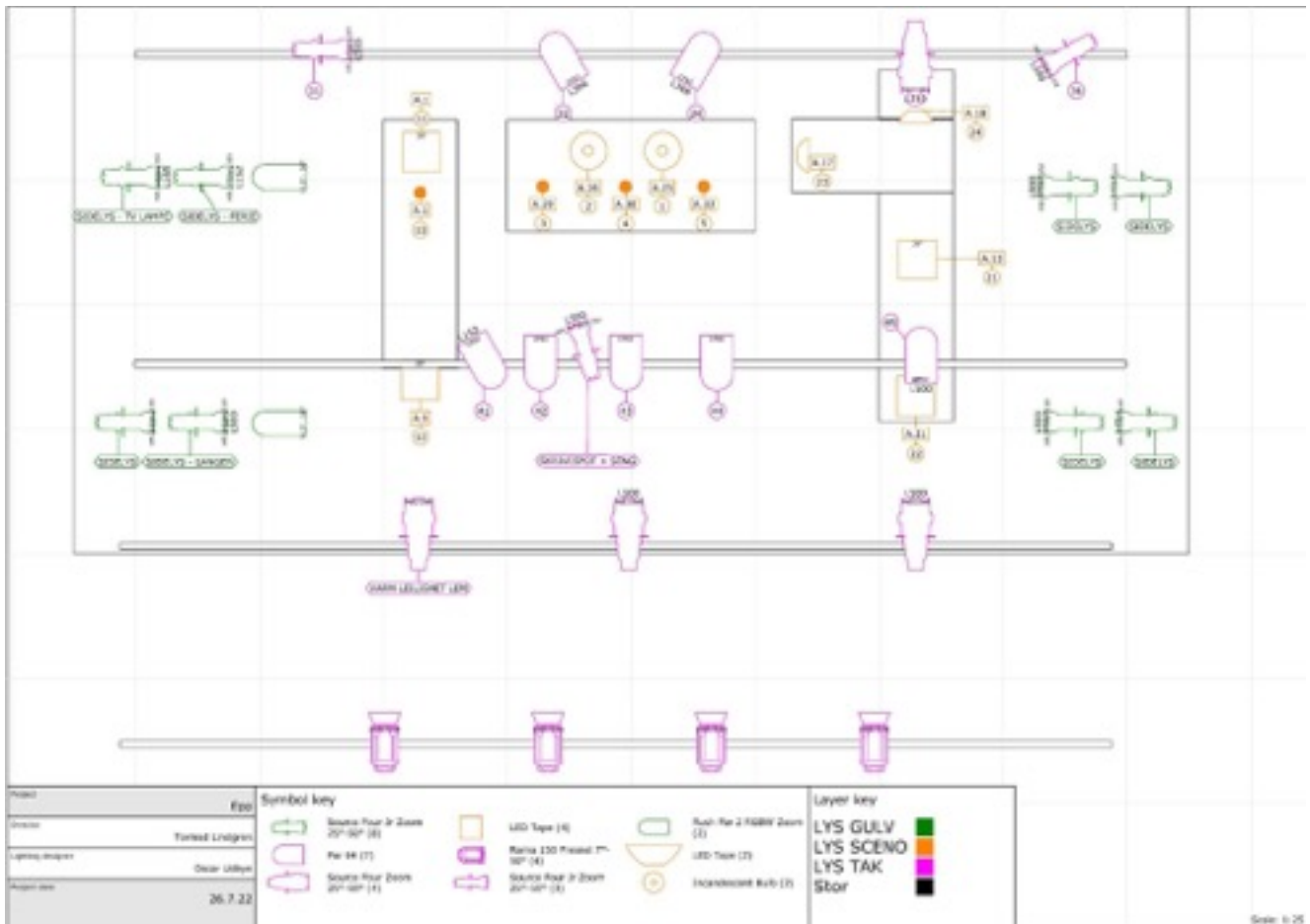
The scenography, puppets and props fits in a 10 m2 van and can be transported by one of the technicians touring the show. The performers and technicians are based in Norway.

Rigging

The company will rig up and down the scenography with assistance from the venue if possible. In addition, there must be time to rig the lights.

Setup: 2 hours

Strike down: 1.5 hours



Side: 1/25

